



Welcome to Families on Faith Adventures @ Home!

Youth Work team and the synod CYDOs and their equivalents.

We hope you will enjoy sharing a time of faith and fellowship together as a family through these stories, games, activities and prayers.

They are not linked to the lectionary but can be used in order as we explore all the different parts of the Bible.

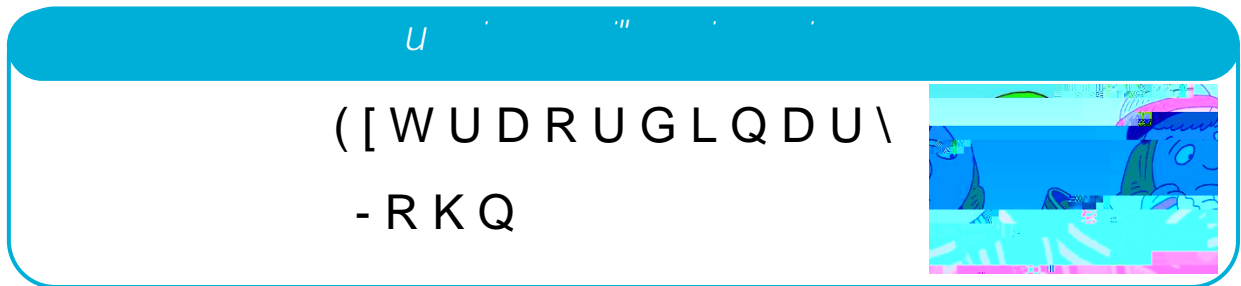
The Walking the Way challenges are one way of continuing our walk with Jesus throughout the week.

These ideas are designed to be intergenerational maybe even to be shared with members

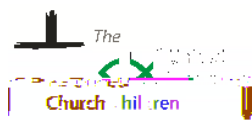
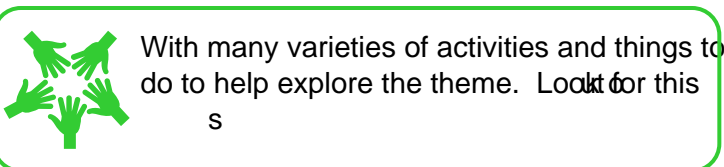
The resources are based on our non-Adventures and Pilots, but have been modified to make them suitable for all families at home.

These activities are planned to be used together as a family and under adult supervision.

support than others Stay safe and have fun!



/oμ•šœ Ÿ}v Ç



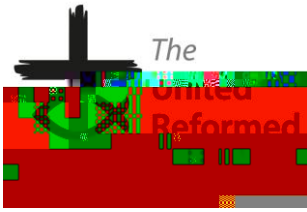


*Get to know your Bible*

The Bible is like a library made up of 66 books written by many c9y6sloa.0n eo aany

6(rHeaing.w)52f rea

TheOld staritsuks@ asf brn.wThey r



" t ]vP š v

dZ ^št}ŒZ v î Āíí~dZ /vš Œv Ÿ}v o Z]o Œ v[• ] o •









†



*Pray Together*

}œ ] o Wœ Ç œ•







$u \setminus ) \setminus u \setminus 8 - u = -k$

o]vP ]š μ‰

- < An old plastic cup
- < Permanent marker
- < Glue
- < Glitter

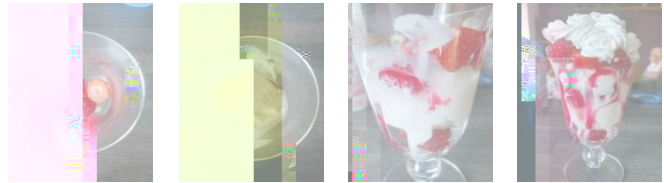
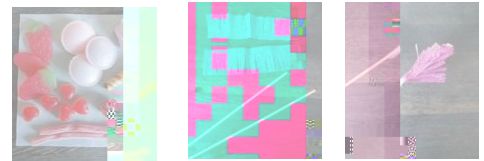
‡



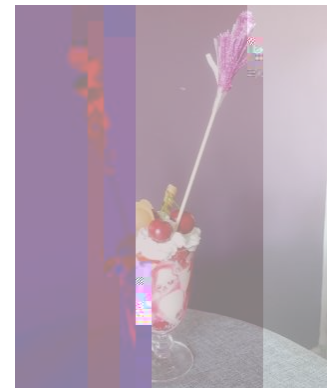
u\ ) \ 'u\ 8-u=-k

<v] | Œ } | Œ P o}Œ Ç

- < A sundae glass or a large wine glass
- < Raspberries and strawberries or other fruit
- < White ice-cream
- < Strawberry or raspberry sauce
- < Squirty cream
- < Sweets and some things to decorate
- < Wooden skewers
- < Some decorative paper/tissue paper

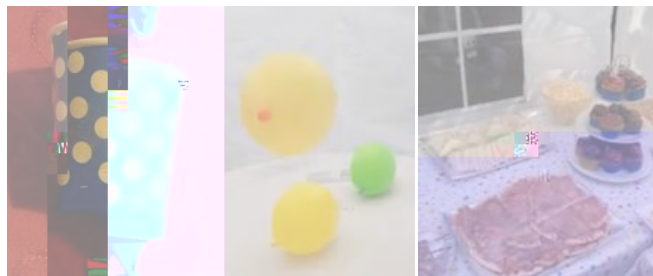


#



W Œ š Ç Ÿ u

- < Party decorations
- < Party plates
- < Party poppers
- < Party food
- < People



#





*Our Walking the Way Challenge  
this time is*



*Adventurers Go!*